



## Hard Chess Puzzle # 0137

By

G Bud Games  
<https://gbud.in>

February 15, 2022

## Contents

<b>Hard Chess puzzle # 0137 - Mate in 3 moves</b>	<b>3</b>
Hard chess puzzle 0137 . . . . .	3
Solution to hard chess puzzle 0137 . . . . .	4
Solution 1 . . . . .	4
Right moves for the solution to the hard chess puzzle 0137	7
Explanation for the moves . . . . .	7
Categories of hard chess puzzle 0137 . . . . .	8
hard chess puzzle 0137 chart . . . . .	9
How to view the solution to hard chess puzzle 0137 . . . . .	11
How to get help for moves in the hard chess puzzle 0137 . . . . .	12
Play chess for free . . . . .	13

## List of Figures

1	<a href="https://gbud.in/g1s99t3">Solve this hard chess puzzle 0137. Mate in 3 moves @ https://gbud.in/g1s99t3</a> . . . . .	3
2	<a href="https://gbud.in/g1s99t3">Solve this hard chess puzzle online with solution @ https://gbud.in/g1s99t3</a> . . . . .	3
3	Initial board position of hard chess puzzle 0137 . . . . .	4
4	Rxg7 . . . . .	5
5	Qxg7 . . . . .	5
6	Ra8+ . . . . .	6
7	Re8 . . . . .	6
8	Rxe8# . . . . .	7
9	hard chess puzzle 137 chart 1 . . . . .	9
10	hard chess puzzle 137 chart 2 . . . . .	10
11	hard chess puzzle 137 chart 3 . . . . .	10
12	hard chess puzzle 137 chart 4 . . . . .	11
13	<a href="https://gbud.in/g1s99t3">Click the solution button to view solutions @ https://gbud.in/g1s99t3</a> . . . . .	11
14	<a href="https://gbud.in/g1s99t3">Click the help button to get help on next move @ https://gbud.in/g1s99t3</a> . . . . .	12
15	<a href="https://gbud.in/chshdpz">Solve more hard puzzles @ https://gbud.in/chshdpz</a> . . . . .	12
16	<a href="https://gbud.in/chsgppz">Solve other puzzles @ https://gbud.in/chsgppz</a> . . . . .	12
17	<a href="#">Play chess online for free. Solve puzzles and play with friends</a> 13	
18	<a href="#">Solve this puzzle online by scanning this QR code or go to the link below</a> . . . . .	14

## Hard Chess puzzle # 0137 - Mate in 3 moves

Solve this hard chess puzzle and improve your chess games through improvement of your chess strategies and chess tactics. This hard puzzle is a subset of [kids games](#).

Puzzle No : 0137

Difficulty level : hard

Description : Mate in 3 moves

Next Move : White

Player level : Advanced

Short URL for puzzle : <https://gbud.in/g1s99t3>

### Hard chess puzzle 0137

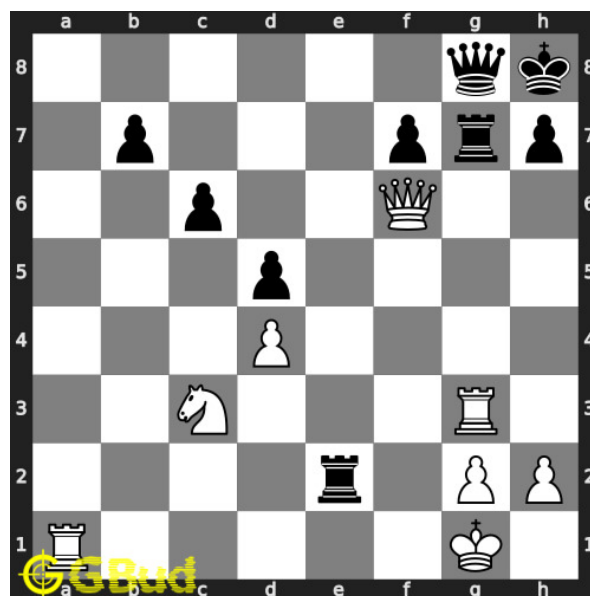


Figure 1: Solve this hard chess puzzle 0137. Mate in 3 moves @ <https://gbud.in/g1s99t3>



Figure 2: Solve this hard chess puzzle online with solution @ <https://gbud.in/g1s99t3>

Dont forget to check out [chess puzzles](#), [easy chess puzzles](#), [medium chess puzzles](#), [hard chess puzzles](#) and [chess puzzles collections](#) .

## Solution to hard chess puzzle 0137

At this puzzle, next [move](#) is by [White](#). The objective of the puzzle is to mate in 3 moves.

See the interactive solution at the [puzzle page](#)

### Solution 1

**Initial board position** This is the initial board position of hard chess puzzle 0137.

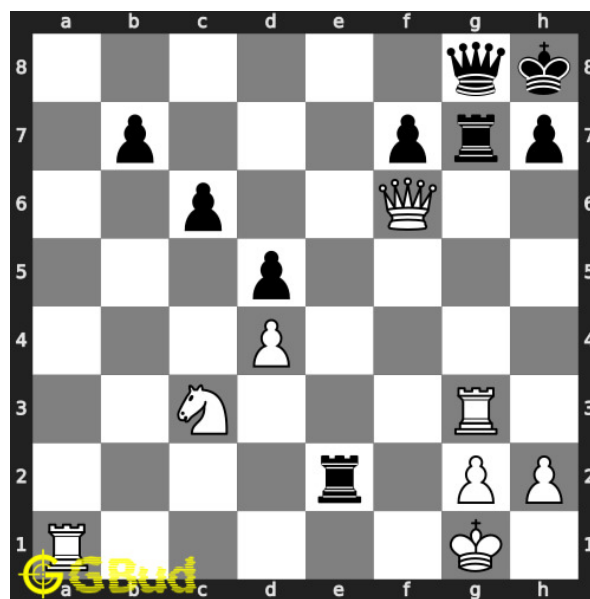


Figure 3: Initial board position of hard chess puzzle 0137

**Move 1** Move by white

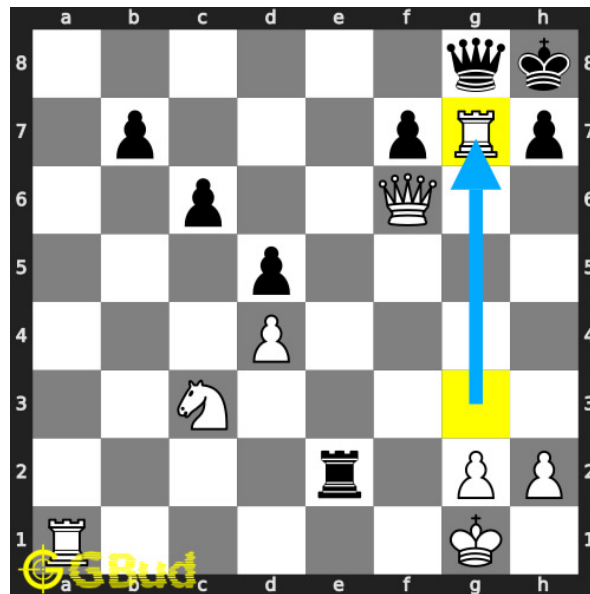


Figure 4: R<sub>x</sub>g7

your **rook sacrifices** itself to attract the opponent's **queen** to **g7** which is guarding the eighth **rank**.

**Move 2** Move by black

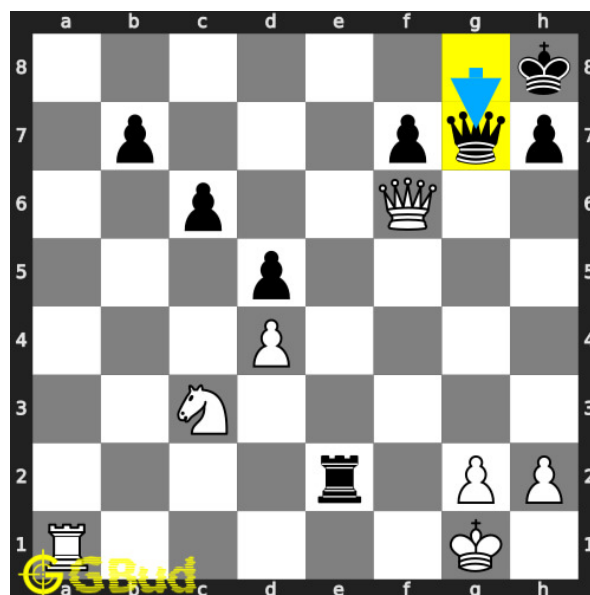


Figure 5: Q<sub>x</sub>g7

this is a zugzwang **move** as the opponent's **queen** is forced to respond. opponent's **queen captures** your **rook** and is now **pinned** to their **king** by your **queen**.

**Move 3** Move by white

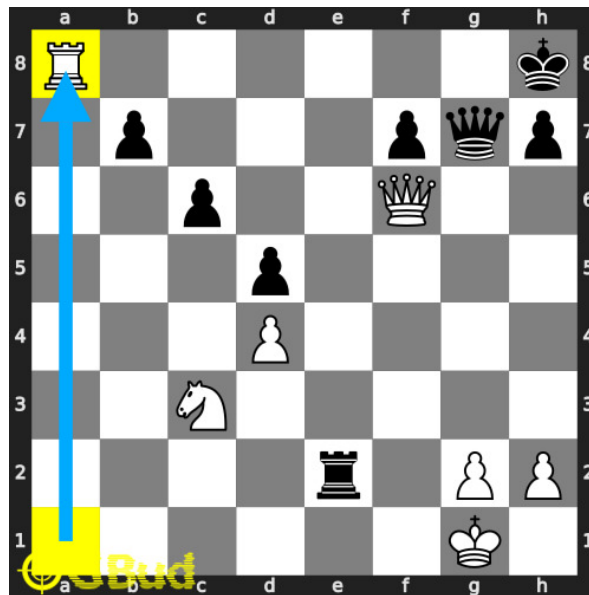


Figure 6: Ra8+

your **rook** moves to **a8** and gives **check**.

**Move 4** Move by black

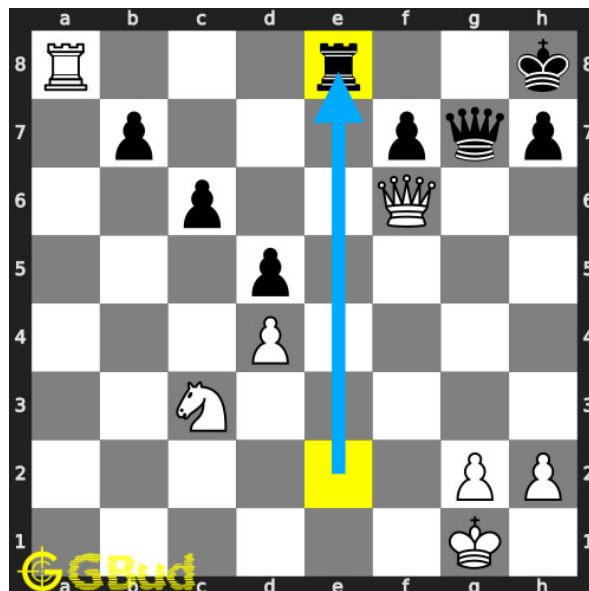


Figure 7: Re8

opponent's **rook** moves to **e8** to block the **check** threat.

## Move 5 Move by white

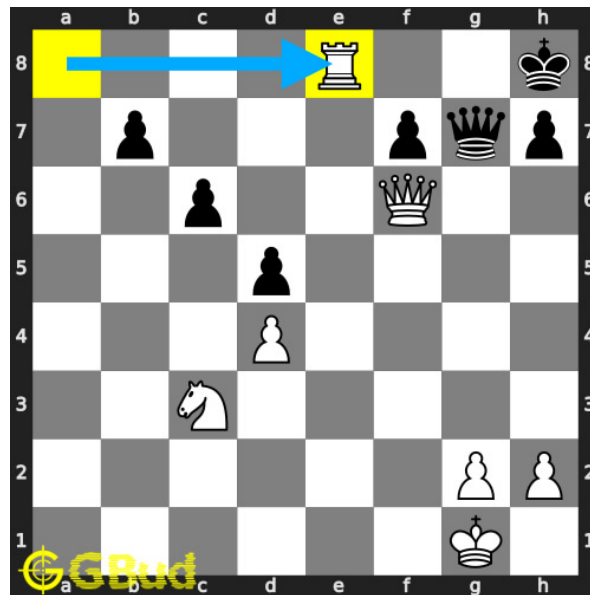


Figure 8: Rxe8#

your **rook captures** opponent's **rook** and **checkmate**. opponent's **king** can't **move** as it is blocked by **pawn**. this is how you can **mate** in 3 **moves**.

## Right moves for the solution to the hard chess puzzle 0137

Based on the objective of the puzzle, you have to make the right moves. Following are the right moves

1. Rxc7, Ra8+, Rxe8#

## Explanation for the moves

1. Rxc7 - Your rook sacrifices itself to attract the opponent's queen to g7 which is guarding the eighth rank.
2. Qxc7 - This is a zugzwang move as the opponent's queen is forced to respond. Opponent's queen captures your rook and is now pinned to their king by your queen.
3. Ra8+ - Your rook moves to a8 and gives check.
4. Re8 - Opponent's rook moves to e8 to block the check threat.
5. Rxe8# - Your rook captures opponent's rook and checkmate. Opponent's king can't move as it is blocked by pawn. This is how you can mate in 3 moves.

6. For right move - Your moves were excellent to have a checkmate. Keep up the good work
7. For wrong move - You failed to have a checkmate. Opportunity never knocks twice

## Categories of hard chess puzzle 0137

This hard chess puzzle falls in these categories.

1. [Hard chess puzzles](#)
2. [Sacrifice puzzles in chess](#)
3. [Mate in 3 puzzles in chess](#)
4. [Endgame puzzles in chess](#)
5. [Strategy puzzles in chess](#)
6. [Zugzwang puzzles in chess](#)
7. [Terminology puzzles in chess](#)
8. [Pin puzzles in chess](#)
9. [Rook puzzles in chess](#)
10. [Queen puzzles in chess](#)



## hard chess puzzle 0137 chart



Figure 9: hard chess puzzle 137 chart 1



Figure 10: hard chess puzzle 137 chart 2

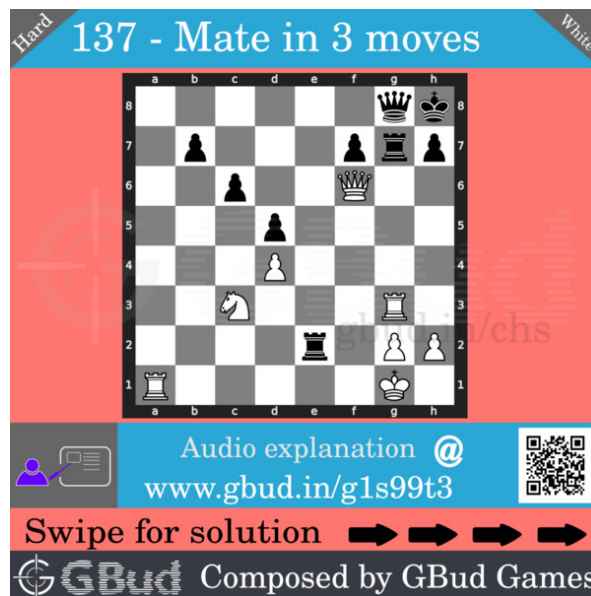


Figure 11: hard chess puzzle 137 chart 3

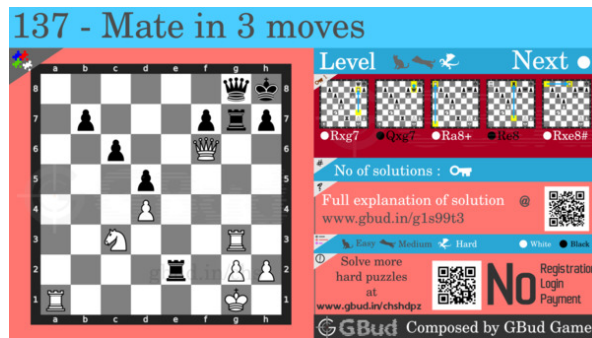


Figure 12: hard chess puzzle 137 chart 4

## How to view the solution to hard chess puzzle 0137

To view the [solution to this puzzle](#), follow the steps given below

1. Go to the [puzzle page](#)
2. Click the solution button (Key as shown [below](#)) to view the solution



Figure 13: Click the solution button to view solutions @ <https://gbud.in/g1s99t3>

## How to get help for moves in the hard chess puzzle 0137

To get help or the possible next moves in the puzzle, , follow the steps given below

1. Go to the [puzzle page](#)
2. Click the help button (exclamation mark as shown [below](#)) to get help or suggestion on next possible [move](#)



Figure 14: Click the help button to get help on next move @ <https://gbud.in/g1s99t3>



Figure 15: Solve more hard puzzles @ <https://gbud.in/chshdpz>



Figure 16: Solve other puzzles @ <https://gbud.in/chsgppz>

## Play chess for free

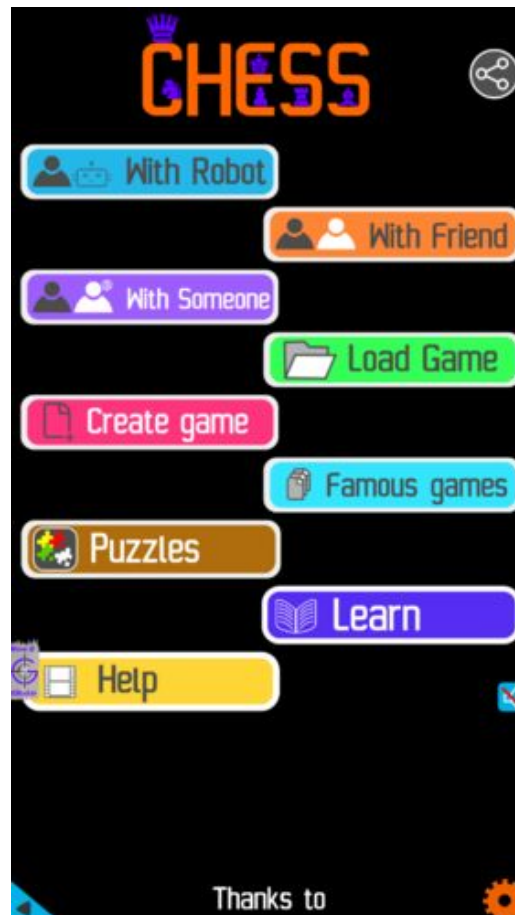


Figure 17: Play chess online for free. Solve puzzles and play with friends

Play chess for free at <https://gbud.in/chs>

We present you a platform to play chess online with friends for free. No need to install any app. You can play chess for free without registration or login.

Simple. You can do several chess related activities.

1. solve chess puzzles
2. learn about chess
3. play chess with computer
4. play chess with friend
5. create your own chess games

6. [fen viewer](#)
7. [fen editor](#)
8. [fen generator](#)
9. [pgn viewer](#)
10. [chess board editor](#)
11. [view famous chess games.](#)



Figure 18: Solve this puzzle online by scanning this QR code or go to the link below

<https://gbud.in/g1s99t3>

Read the latest article on Hard Chess puzzle # 0137 - Mate in 3 moves by scanning this QR code or click the link

Previous article : [« Hard Chess puzzle # 0136 - Mate in 4 moves](#)

Next article : [Hard Chess puzzle # 0138 - Gain opponent's queen in 3 moves »](#)

[Back to top](#)

[Contact Us](#)